

# LED Headlight for Road Glide Models

VST-010101-003



## BEFORE YOU BEGIN

Read these instructions and check to be sure all parts and tools are accounted for. Please retain these installation instructions for future reference.

## IMPORTANT

This headlight is exclusively designed for your vehicle. Please read the installation instructions thoroughly before beginning. Installation is easier if the vehicle is clean and free of debris.

## INSTALLATION INSTRUCTIONS

Note: Shift vehicle transmission into "PARK". Turn key to "OFF" position and remove from vehicle.

1. First remove the screws around the instrument panel and the screws around the turn signal light bracket on both sides of the vehicle, as shown in the picture

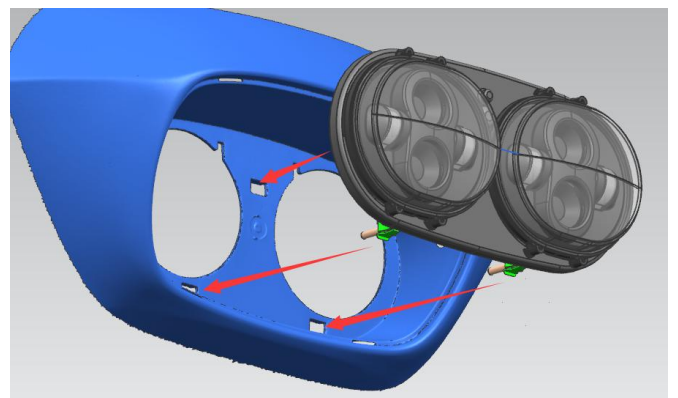
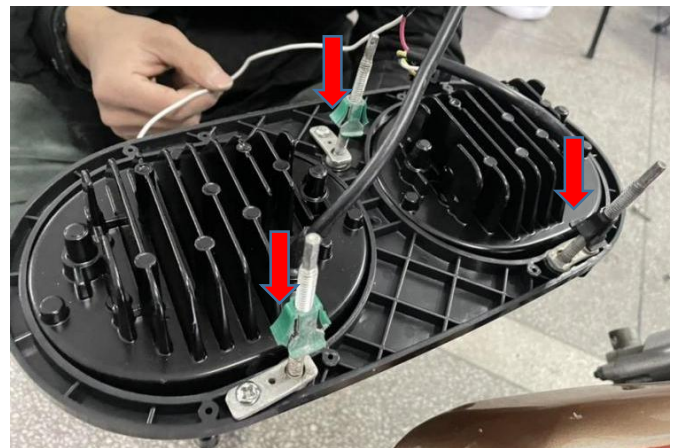


2. Remove the headlight protection cover, disconnect the wiring harness plug-ins of headlight, and remove the original headlight, as shown in the picture:



# LED Headlight for Road Glide Models

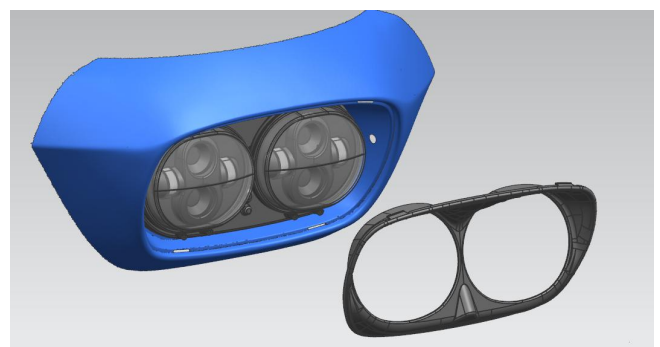
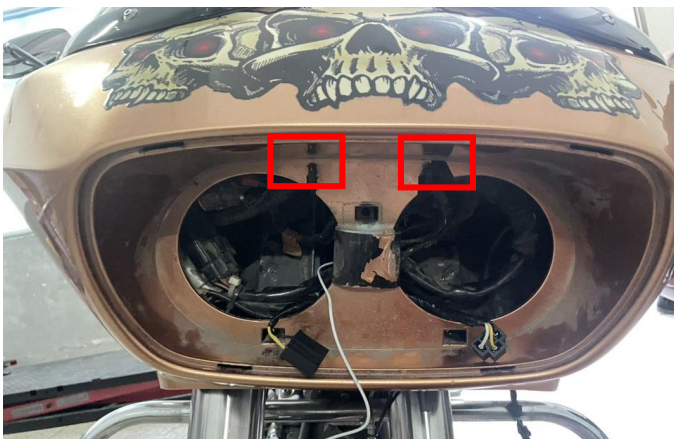
VST-010101-003



3. Reinstall the headlight protection cover on the body, as shown in the picture:

Note: During installation, the two inverted hooks on the vehicle body must be hooked to the protection cover, to avoid falling off.

5. After the headlight is installed, clamp the eagle mouth cover (corresponding to the slot during installation). Reinstall the parts removed before, as shown in the picture:



4. Get the ball screws from the original headlight, fix them on the new headlight frame by the fingerprint resistant plate( as the red arrow shown in the picture), connect the wiring harness plug-ins of the headlight and vehicle, start the vehicle, check whether the headlight work normally, and finally, fix the headlight with screws. As shown in the picture:



6. Installation finished.