

LED Headlights for Harley Road Glide 2007 - 2013

VST-010101-011



BEFORE YOU BEGIN

Read these instructions and check to be sure all parts and tools are accounted for. Please retain these installation instructions for future reference.

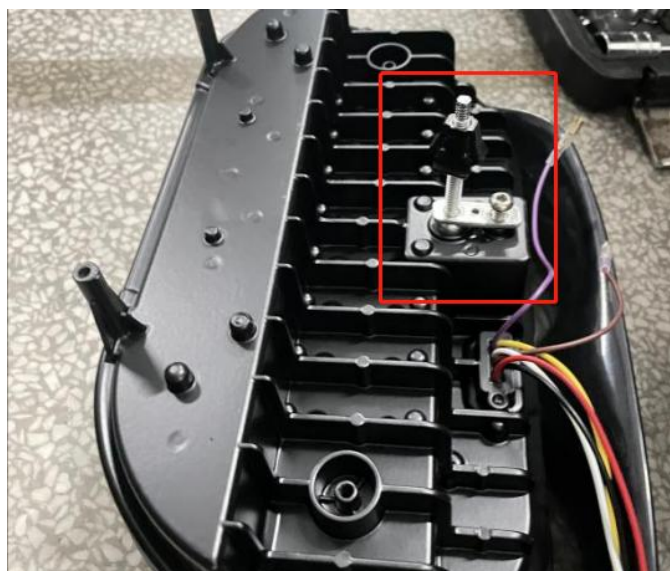
IMPORTANT

This headlight is exclusively designed for your vehicle. Please read the installation instructions thoroughly before beginning. Installation is easier if the vehicle is clean and free of debris.

INSTALLATION INSTRUCTIONS

Note: Shift vehicle transmission into "PARK". Turn key to "OFF" position and remove from vehicle.

1. Product Display.

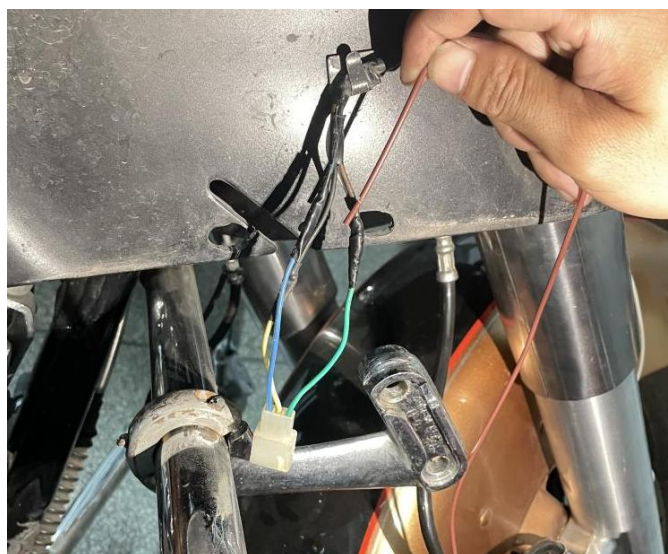


2. Assemble the ball screw, ball screw cover and pressing plate in the package (as shown in the first picture below); Then fix it on the rear housing of the headlamp with screws (as shown in the second picture below):

3. Remove the head protection cover, disconnect the harness of the headlamp, and remove the original lamp. As shown:

LED Headlights for Harley Road Glide 2007 - 2013

VST-010101-011



4. Connect the brown and purple turn signal extension wires in the package with the brown wires in the turn signal harness on both sides of the original motorcycle, and then pull the turn signal extension wires on both sides to the headlamp. In the subsequent steps, connect the wire harness with the color corresponding to the new headlight. As shown:

(Note: the right steering is connected to the brown extension wire, and the left steering is connected to the purple extension wire). As shown:

5. Follow these steps:

Step 1: Remove the original seat cushion and the trunk on one side.

Step 2: Remove the trim panel on one side of the junction box and the mailbox trim.

Step 3: Pull the red extension wire from the junction box to the headlamp (the exposed extension wire in the middle and the original harness are hidden under the fuel tank trim).

Step 4: Install the fuel return tank trim. As shown:

LED Headlights for Harley Road Glide 2007 - 2013

VST-010101-011



6. Follow these steps:

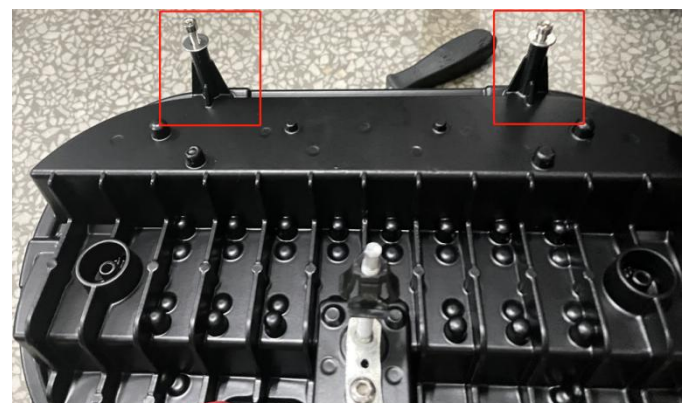
Step 1: Install the new headlight in the protective cover and fix it with screws

Step 2: Install the headlamp decorative frame

Step 3: Connect the main harness of the headlamp, turn signal lamp harness and daytime running lamp harness with the harness of the original motorcycle, and do a good job of insulation protection. (Brown to brown, purple to purple, red to red)

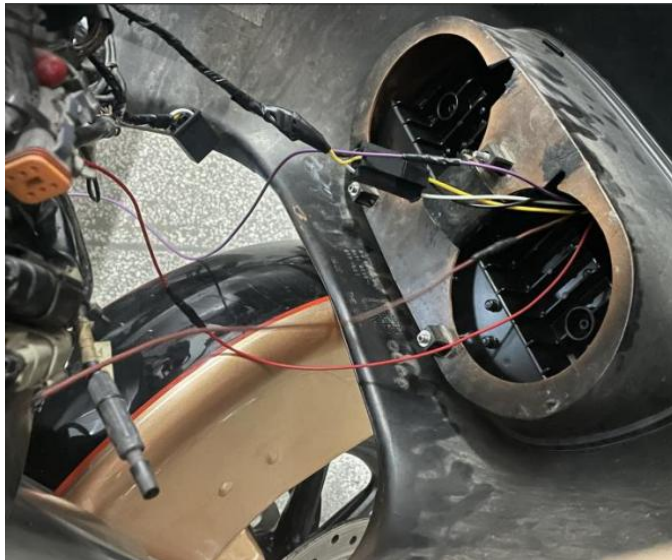
Step 4: Install the protective cover back on the motorcycle. As shown:

Note: The screw holes on the rear housing bracket of the headlight need to be handled in advance (screw down the screws first, and then withdraw the screws), so that they can be fixed properly during installation

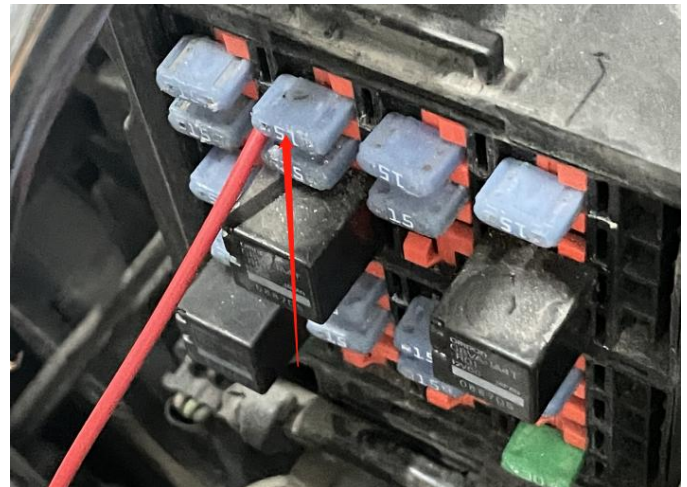
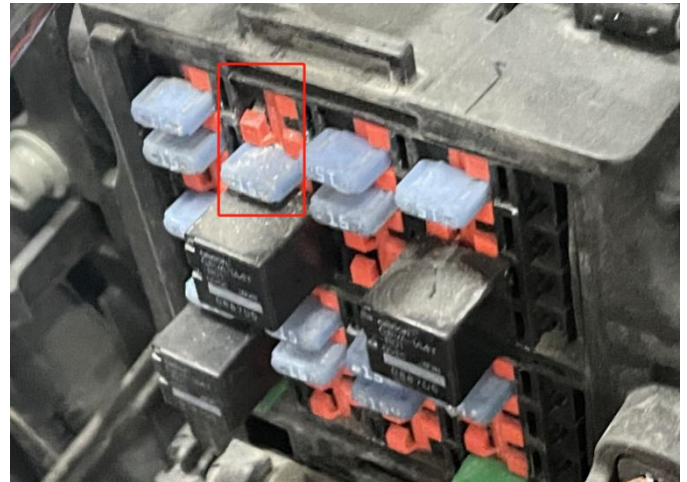


LED Headlights for Harley Road Glide 2007 - 2013

VST-010101-011



7. After completing all the above steps, return to the position of the junction box. After connecting the red extension cable to the battery box, install the trim panel, trunk and cushion back. As shown:



LED Headlights for Harley Road Glide 2007 - 2013

VST-010101-011



8. Installation finished.

