

Led Saddlebag Taillights for Touring Street Road

VST-010102-003



BEFORE YOU BEGIN

Read these instructions and check to be sure all parts and tools are accounted for. Please retain these installation instructions for future reference.

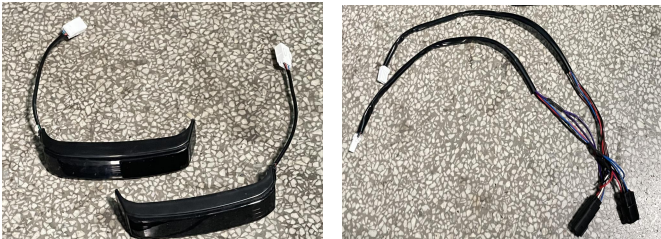
IMPORTANT

These Taillights are exclusively designed for your vehicle. Please read the installation instructions thoroughly before beginning. Installation is easier if the vehicle is clean and free of debris.

INSTALLATION INSTRUCTIONS

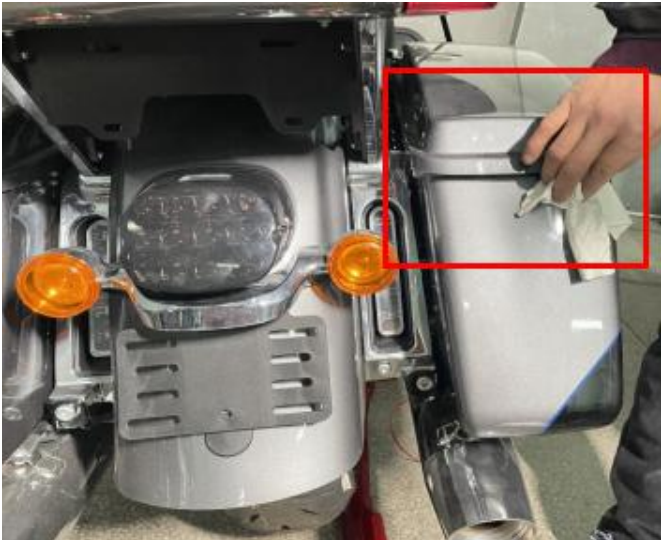
Note: Shift vehicle transmission into "PARK". Turn key to "OFF" position and remove from vehicle.

1. Pictures of products and accessories.

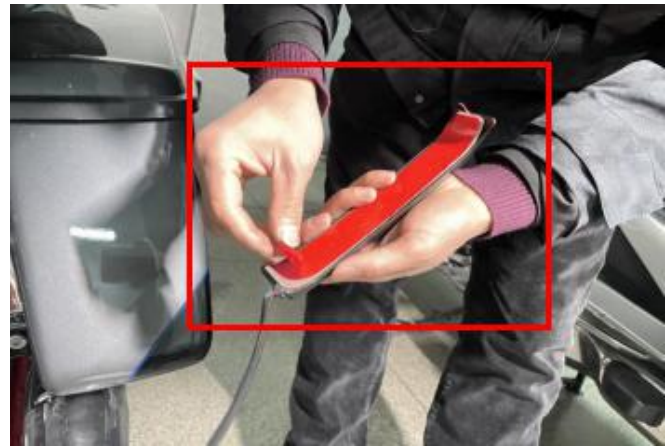


2. Distinguish the left and right sides of the taillight in advance.

Wipe the surface of the installation area with clean cloth.



Remove the double-sided adhesive on the back of the taillight, install the light at the edge of the saddlebag opening, press hard to make the lamp fit with the vehicle completely (install the other side as the same steps) as shown in the picture:



3. Find the original wiring harness that hidden under the rear of the seat cushion and unplug the plug-ins, and reconnect the plug-ins of the original wiring harness with the wiring adapters equipped in the new product, as shown in the picture:



Led Saddlebag Taillights for Touring Street Road

VST-010102-003



4. Pull the connected adapter cables to the taillights on both sides, connect them with the taillights wiring harness, and sort

As shown in picture:

Note: When operating this step, connect the taillight on one side with the adapter cable first, then start the vehicle, turn on the turn light on the corresponding side to check whether the turn light in the taillight works properly. If the turn light in the taillight does not work, replace the other adapter cable to connect with it.

5. Installation complete .

