

# Saddlebag Side Marker Lights Kit for Harley Road Glide

VST-010102-011



## BEFORE YOU BEGIN

Read these instructions and check to be sure all parts and tools are accounted for. Please retain these installation instructions for future reference.

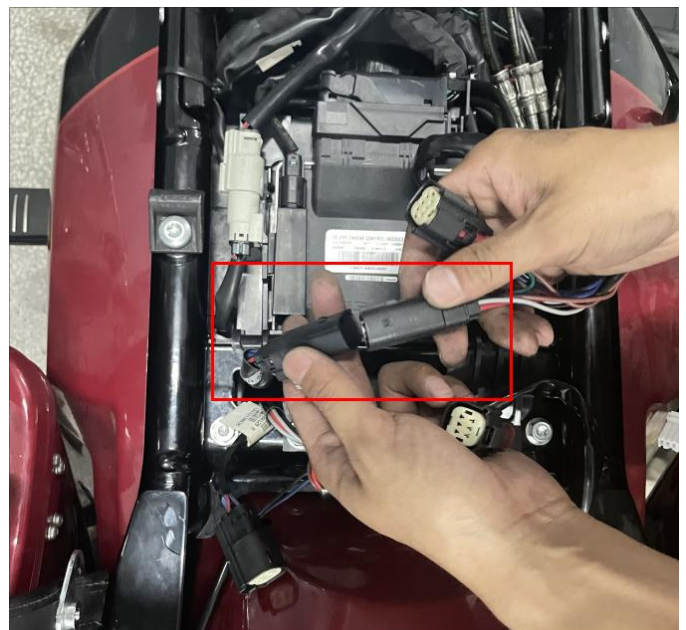
## IMPORTANT

These saddlebag side marker lights kit are exclusively designed for your vehicle. Please read the installation instructions thoroughly before beginning. Installation is easier if the vehicle is clean and free of debris.

## INSTALLATION INSTRUCTIONS

Note: Shift vehicle transmission into "PARK". Turn key to "OFF" position and remove from vehicle.

1. Pictures of products and accessories.



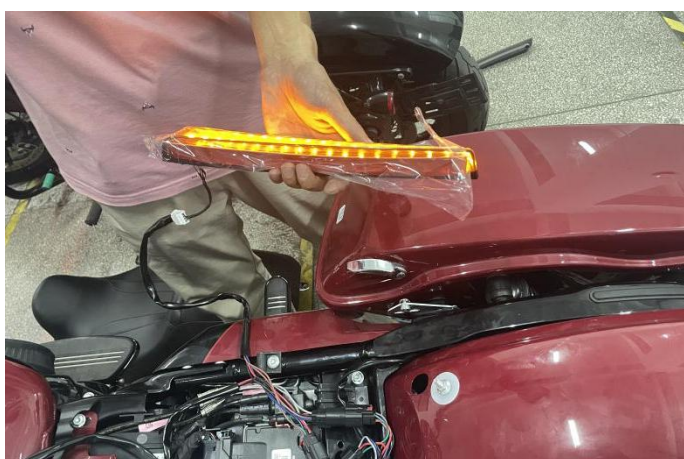
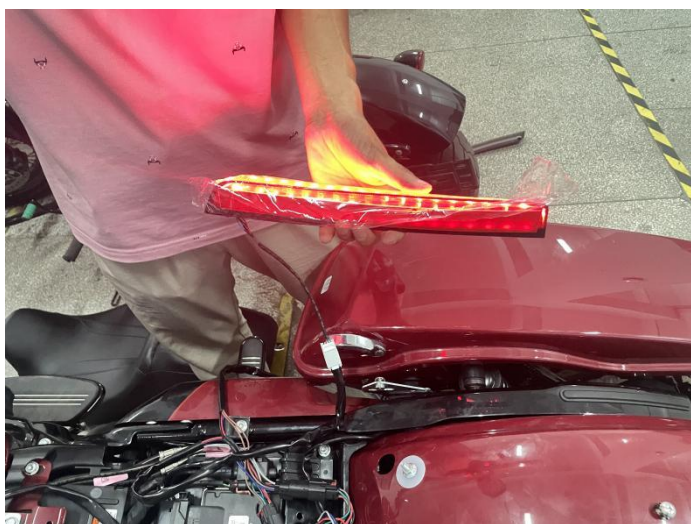
2. Open the saddlebag cover of the original car and remove the cushion. After locating the original car taillight wiring harness plug-in, and disconnect it. Then reconnect it with the corresponding plug-in using the adapter cable provided with the product. As shown in the picture:

# Saddlebag Side Marker Lights Kit for Harley Road Glide

VST-010102-011



3. Connect the wiring harness on the decorative light to the extension wire of one of the adapter wires, then start the car, turn on the steering switch, and check whether the turn-signal of the decorative light matches the steering function of the original car. If the function is inverse, re-exchange the extension wire. (Use this to distinguish the left and right sides of the decorative lamp). As shown in the picture:



4. Wipe the bottom of the saddlebag of the original car clean with a towel first, then remove the anti-film on the rear shell of the decor light, and stick the decor lights to the bottom of the saddlebag. (The other side can be installed in the same way). Finally, install the original vehicle cushion. As shown in the picture:

# Saddlebag Side Marker Lights Kit for Harley Road Glide

VST-010102-011



5. Installation finished.

