

LED Headlight Vent Accent Turn Signal Lights for Harley Road Glide

VST-010102-016



BEFORE YOU BEGIN

Read these instructions and check to be sure all parts and tools are accounted for. Please retain these installation instructions for future reference.

IMPORTANT

This LED Headlight Vent Accent Turn Signal Lights is exclusively designed for your motorcycle. Please read the installation instructions thoroughly before beginning. Installation is easier if the motorcycle is clean and free of debris.

INSTALLATION INSTRUCTIONS

Note: Shift motorcycle transmission into "PARK". Turn key to "OFF" position and remove from motorcycle.

1. Products Display



2. Remove the windshield and headlight cover of the original motorcycle. (Just unscrew the screws that secure the headlight cover. Do not remove the headlight cover completely, just have enough space to install the wiring harness for the decorative lights.). As the picture shows:



3. First, thread the adapter cable inside the package through the headlight cover, pull it to the windshield position, and connect it to the original motorcycle turn signal plug; Then connect the other end of the adapter cable to the wiring harness connector on the turn signal light (connect the wiring harness in the same way on the other end). After completion, start

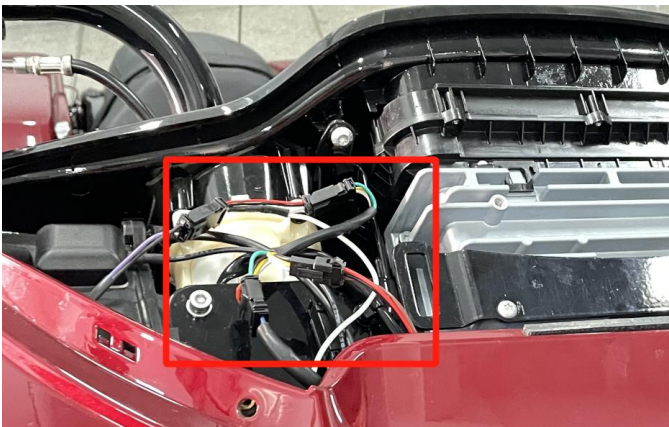
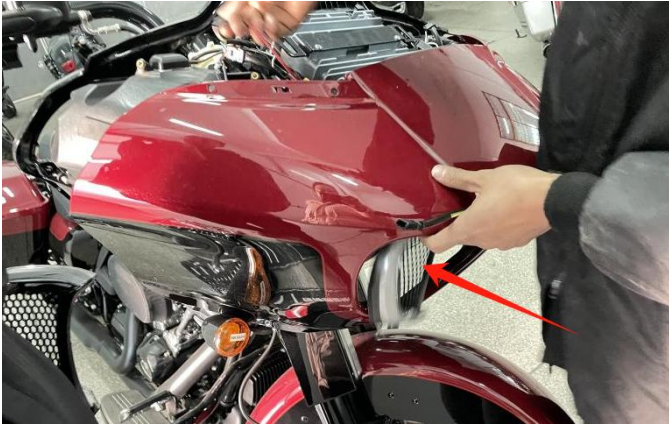
LED Headlight Vent Accent Turn Signal Lights for Harley Road Glide

VST-010102-016

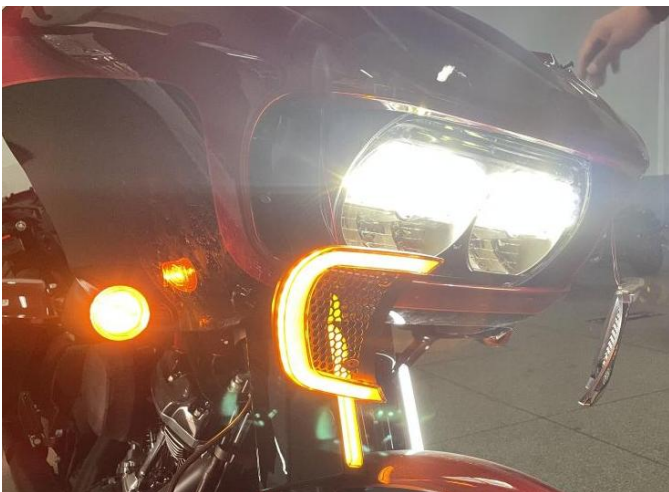


the motorcycle, check the turn signal lights and daytime running lights function, confirm that there are no errors, and then install the headlight cover and windshield back in place. As the picture shows:

4. Finally, use self tapping screws to fix the turn signal light onto the original headlight frame. As the picture shows:



5. Installation finished.



Note: Please refer to the installation video in the Amazon listing before your installation, or contact the seller for the installation video.