

Fairing Rear View Mirror for Harley Street Glide

2014+

VST-010105-001



BEFORE YOU BEGIN

Read these instructions and check to be sure all parts and tools are accounted for. Please retain these installation instructions for future reference.

IMPORTANT

This fairing rear view mirror is exclusively designed for your motorcycle. Please read the installation instructions thoroughly before beginning. Installation is easier if the motorcycle is clean and free of debris.

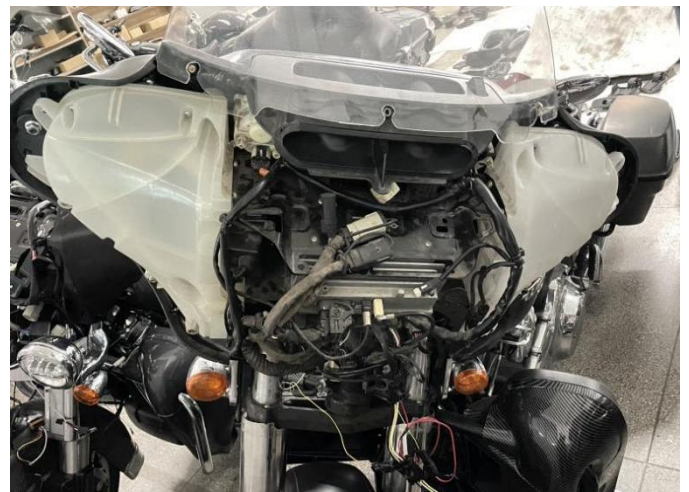
INSTALLATION INSTRUCTIONS

Note: Shift motorcycle transmission into "PARK". Turn key to "OFF" position and remove from motorcycle.

1. Products Display



2. First remove the original windshield and fairing cover. As the picture shows:



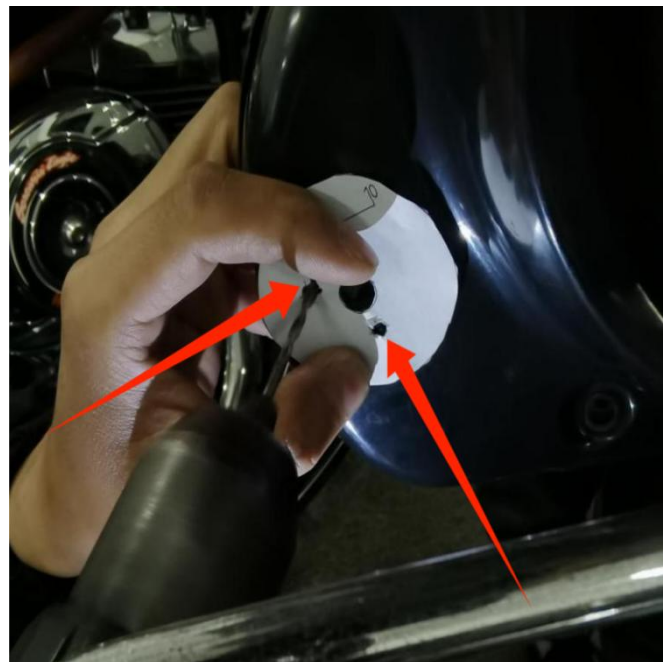
3. Find the anchor point reserved on the original fairing, then take out the template paper in the package (need to distinguish between left and right), align the center hole on the paper with the original positioning hole, and then use a 10mm drill bit to drill (**need to drill at an oblique angle from the outside to the inside**), and then use a 4mm drill bit to drill the rest of the 2 anchor holes.



Fairing Rear View Mirror for Harley Street Glide

2014+

VST-010105-001



4. Finally, put the screws on the back of the mirror through the center hole just drilled, then put the nylon base over the screws, lock the nut, and use the same way to install the other side, and then install the original fairing cover as well as the windshield after both sides are installed.. As the picture shows:

Note: If the positioning post on the back of the mirror interferes with the 4mm positioning hole just drilled, use a tool to ream out the positioning hole again and expand it to the right size before installing the reversing mirror.

Fairing Rear View Mirror for Harley Street Glide

2014+

VST-010105-001



5. Installation finished.



Note: Please refer to the installation video in the Amazon listing before your installation, or contact the seller for the installation video.