

Driving Fog Lamp Kit for Honda Gold Wing GL1800

VST-010202-001



BEFORE YOU BEGIN

Read these instructions and check to be sure all parts and tools are accounted for. Please retain these installation instructions for future reference.

IMPORTANT

This driving fog lamp kits are exclusively designed for your vehicle. Please read the installation instructions thoroughly before beginning. Installation is easier if the vehicle is clean and free of debris.

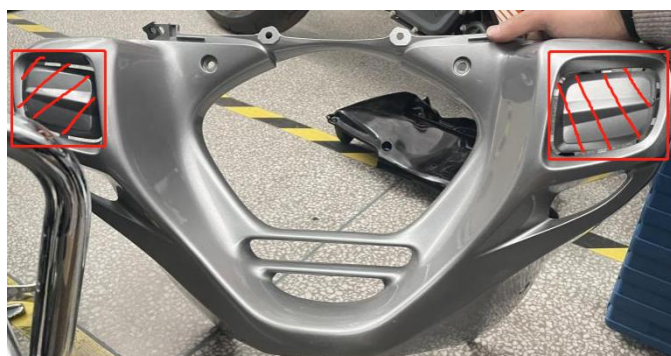
INSTALLATION INSTRUCTIONS

Note: Shift vehicle transmission into "PARK". Turn key to "OFF" position and remove from vehicle.

1. Products Display



2. Remove the original front wheel lower guard board and the original fog lamp mounting bracket, then pry off the fog lamp cover plate. As the picture shows:

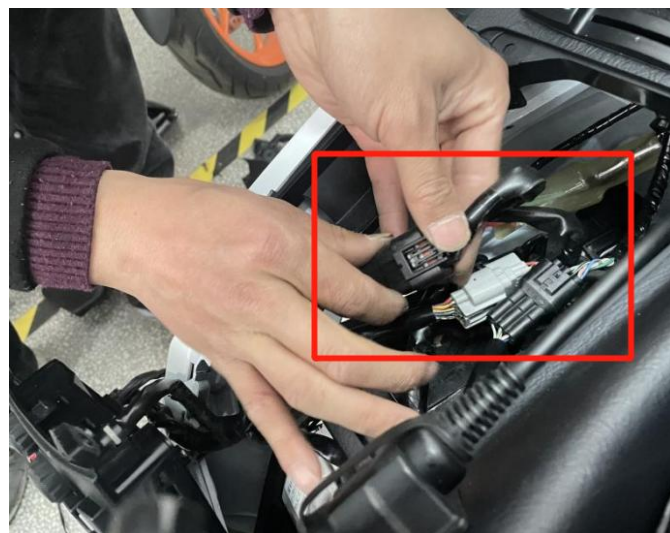


3. Remove the storage box, function switch panel and disconnect the harness connector, and then install the switch adapter wire in the package onto the switch panel. As the picture shows:



Driving Fog Lamp Kit for Honda Gold Wing GL1800

VST-010202-001



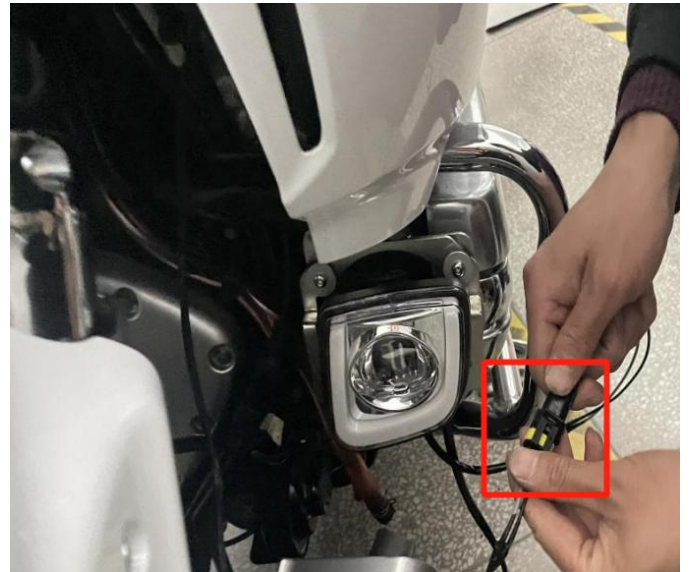
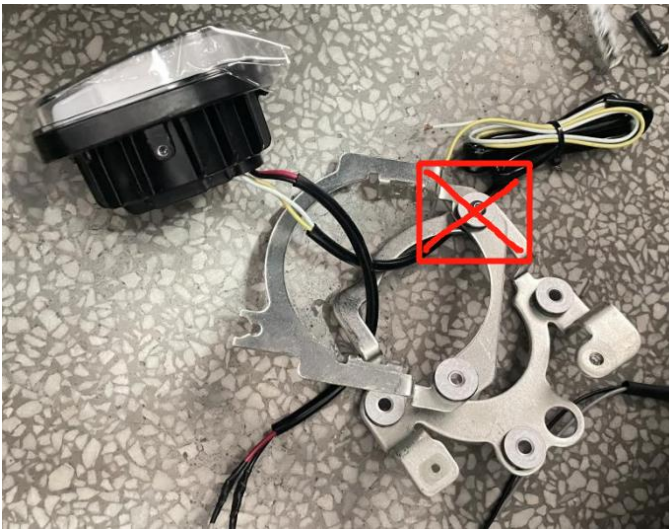
4. Connect the white harness connector of the additional switch with the harness connector of the original motorcycle, and pull the other end to the fog lamp to connect with the new fog lamp harness. After completion, connect the switch panel harness and install it back to the panel and storage box. As the picture shows:



5. Before installing the fog lamp, it is necessary to remove the fog lamp from the bracket, unscrew 3 screws on the bracket and keep one. Then install the bracket on the motorcycle and fix it. Replace the three screws that were removed. Finally, install the fog lamp on the bracket and connect the harness with the extension harness of the additional switch. As the picture shows:

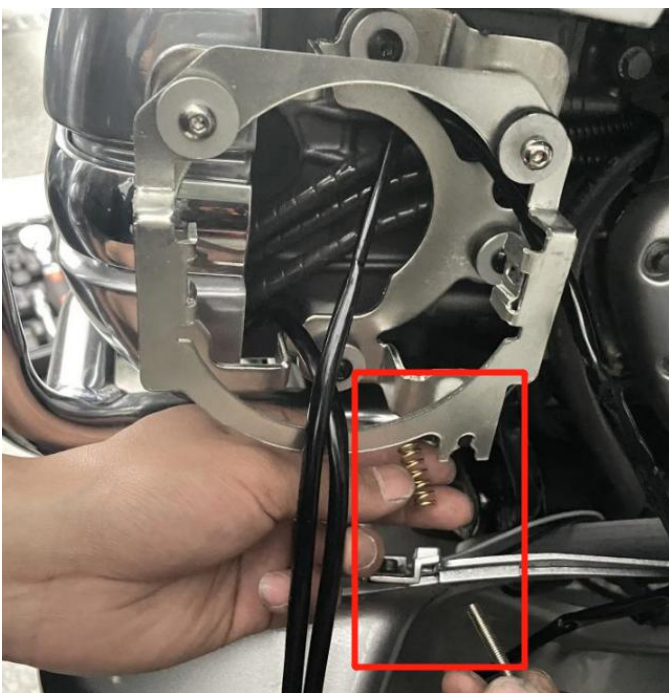
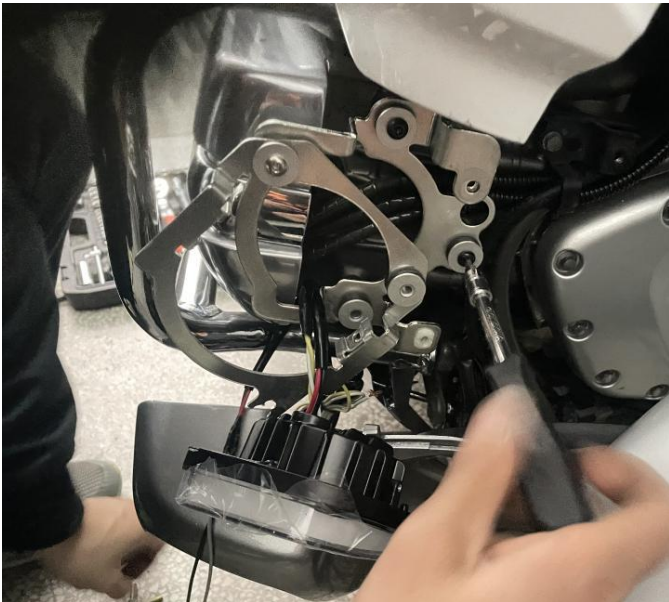
Driving Fog Lamp Kit for Honda Gold Wing GL1800

VST-010202-001



Note: There is a fixing point in the bracket for fixing the fog lamp, and a spring is added inside. The angle of the fog lamp can be adjusted by the tightness of the screw

6. Remove the steering lamp of the original motorcycle and disconnect the harness connector inside. As the picture shows:



Driving Fog Lamp Kit for Honda Gold Wing GL1800

VST-010202-001



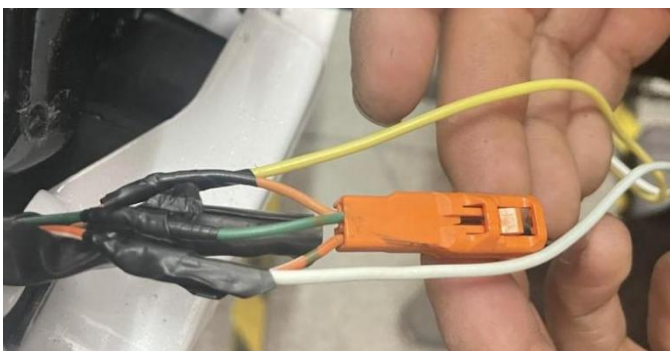
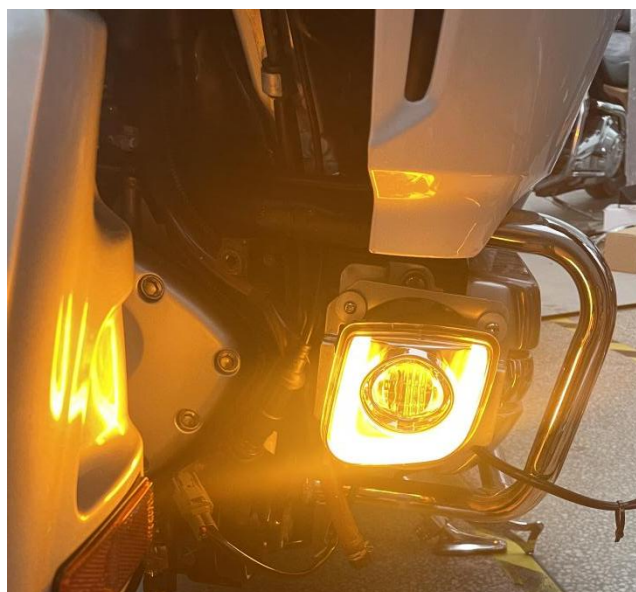
7. Pull the daytime running lamp and turn signal lamp harness of the fog lamp along the direction of the original motorcycle harness to the position of the original turn signal lamp of the motorcycle, connect the functional corresponding harness to the original turn signal lamp harness of the motorcycle according to the operation method in the picture, and finally install the turn signal lamp and the front lower guard board. (The installation steps on the other side are the same). As the picture shows:



Notice:

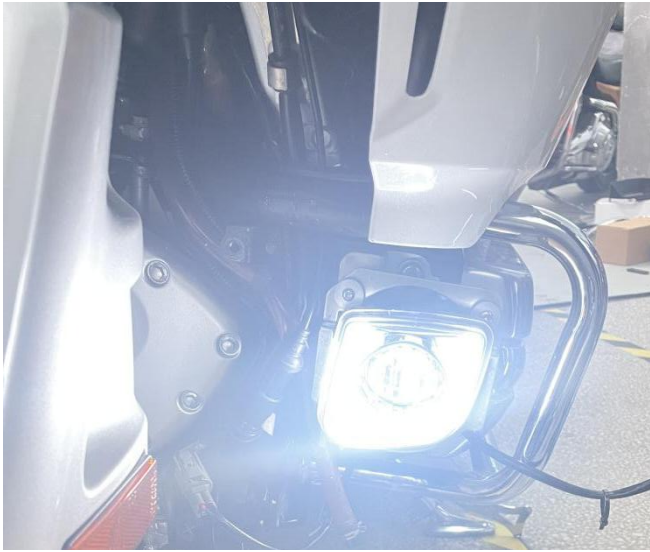
1. Do not cut the copper wire when the harness is broken
2. The connected harness needs to be insulated
3. When the harness color of the motorcycle turn signal lamp is inconsistent with that in the figure, the function corresponding to the harness color of the motorcycle turn signal lamp shall be tested in advance, and then the connection shall be made according to the actual situation and the operation steps in the figure

8. Installation finished.



Driving Fog Lamp Kit for Honda Gold Wing GL1800

VST-010202-001



Note: Please refer to the installation video in the Amazon listing before your installation, or contact the seller for the installation video.