

# Front Brake Rotor Cover with LED Lights for Honda Gold Wing GL1800

VST-010202-004



## BEFORE YOU BEGIN

Read these instructions and check to be sure all parts and tools are accounted for. Please retain these installation instructions for future reference.

## IMPORTANT

This front brake rotor cover with LED light is exclusively designed for your motorcycle. Please read the installation instructions thoroughly before beginning. Installation is easier if the vehicle is clean and free of debris.

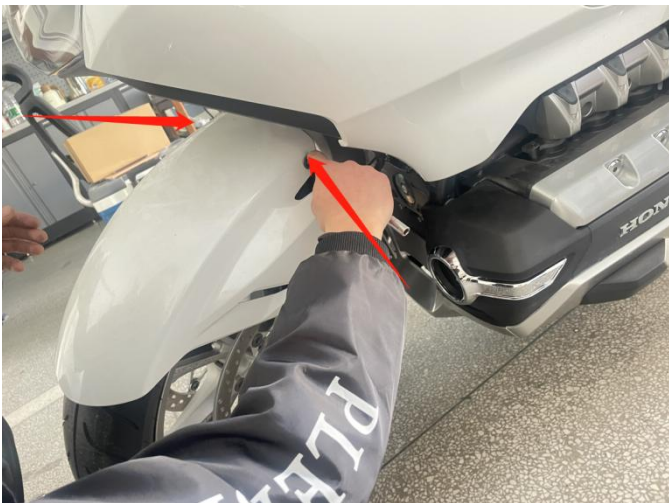
## INSTALLATION INSTRUCTIONS

Note: Shift motorcycle transmission into "PARK". Turn key to "OFF" position and remove from motorcycle.

### 1. Products Display



### 2. Remove the upper fender of the original motorcycle front wheel. As the picture shows:

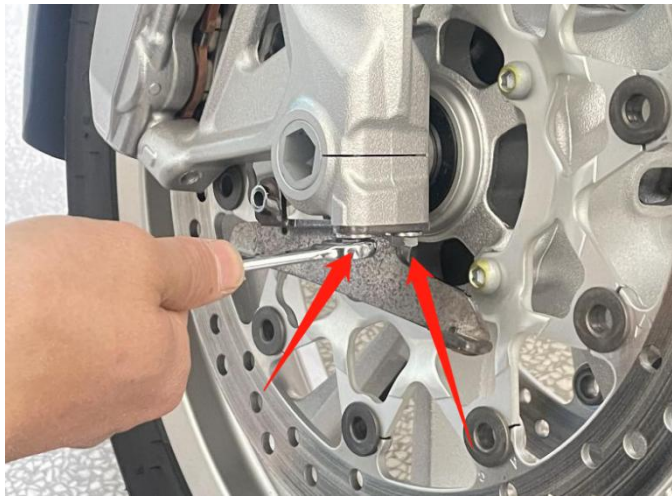


### 3. First distinguish between the left and right iron brackets, then remove the screws at the bottom of the tire bracket on one side, install the iron bracket in the identified direction, and finally reinstall the screws. As the picture shows:



# Front Brake Rotor Cover with LED Lights for Honda Gold Wing GL1800

VST-010202-004



4. Assemble the separated decorative lights into a whole and secure them with nuts and shorter screw. As the picture shows:

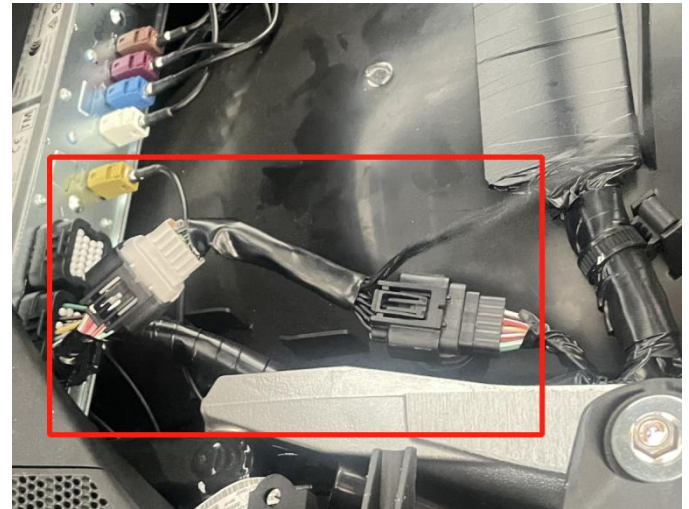
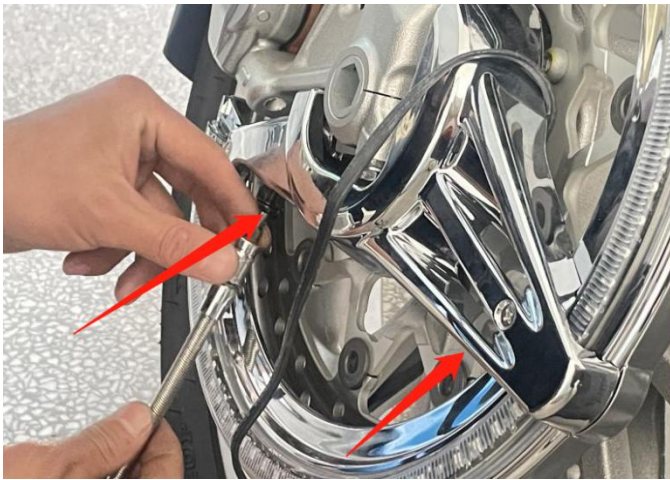


5. First install the L-shaped bracket on the top of the decorative light (note: the screw holes on the L-shaped bracket need to be aligned with the screw holes on the motorcycle's upper fender), and then install the decorative light on the motorcycle. Finally, fix it with screws. As the picture shows:



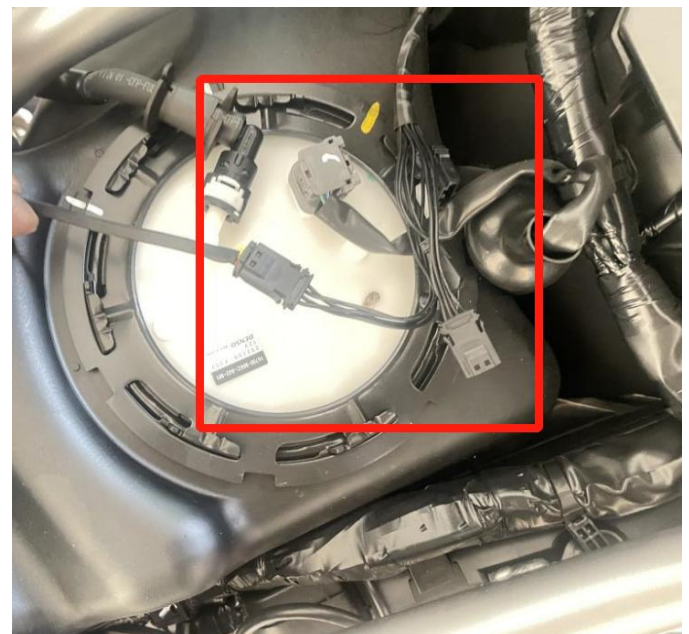
# Front Brake Rotor Cover with LED Lights for Honda Gold Wing GL1800

VST-010202-004



6. Remove the decorative panels and seat cushions on both sides of the motorcycle. After finding the motorcycle tail light harness connector, disconnect it and connect it to the corresponding motorcycle harness connector using the adapter cable in the package. As the picture shows:

7. Pull the wiring harness on the decorative light along the gap of the motorcycle to the seat cushion, and connect it with the reserved plug-in on the adapter line. (The decorative light on the other side can be installed according to the above steps.) After the decorative light on the other side is installed, the mudguard and seat cushion can be installed back in place. As the picture shows:



# Front Brake Rotor Cover with LED Lights for Honda Gold Wing GL1800

VST-010202-004



8.Installation finished.



**Note:** Please refer to the installation video in the Amazon listing before your installation, or contact the seller for the installation video.