

Rear View Mirror Trim for Honda Gold Wing

VST-010203-001



BEFORE YOU BEGIN

Read these instructions and check to be sure all parts and tools are accounted for. Please retain these installation instructions for future reference.

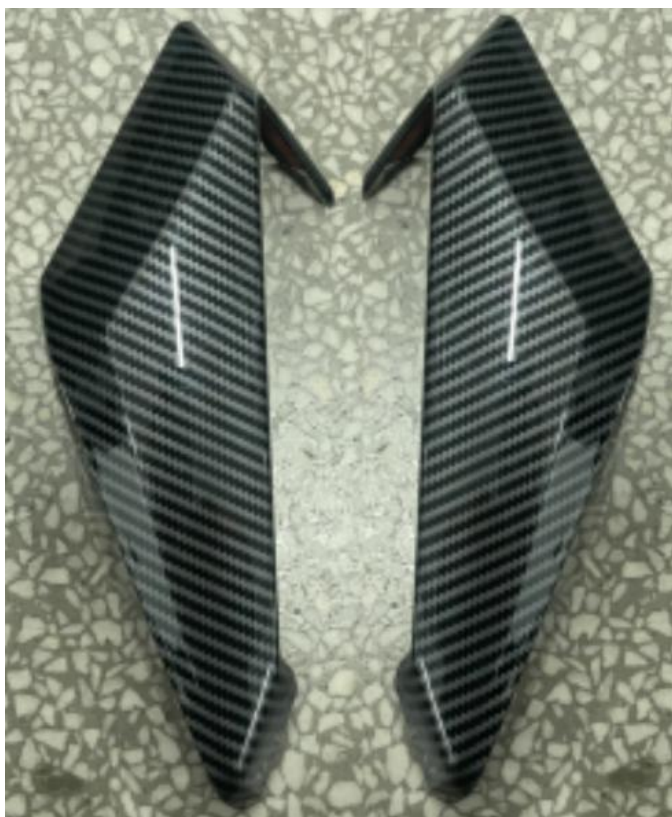
IMPORTANT

This rear view mirror trim is exclusively designed for your vehicle. Please read the installation instructions thoroughly before beginning. Installation is easier if the vehicle is clean and free of debris.

INSTALLATION INSTRUCTIONS

Note: Shift vehicle transmission into "PARK". Turn key to "OFF" position and remove from vehicle.

1. Products Display



2. Please follow the steps below:

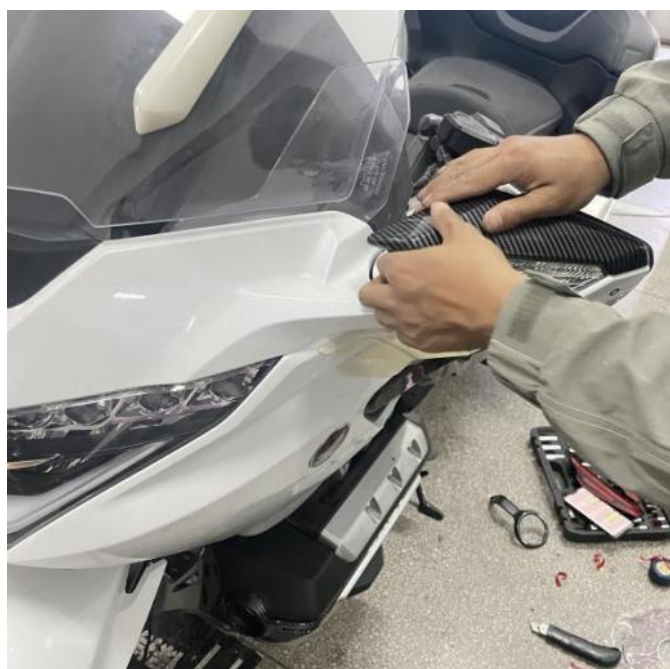
Step 1: Clean the rear view mirror area

Step 2: Distinguish the left and right sides of the product

Step 3: Tear off the protective film on the sticker

Step 4: Paste the product on the rear view mirror (moderately pressing can make the product fit better)

As the picture shows:



Note: Install the other side in the same way.

Rear View Mirror Trim for Honda Gold Wing

VST-010203-001



3. Installation finished.

