

LED Auxiliary Light for BMW R1250GS 2014-2023

VST-010502-001



BEFORE YOU BEGIN

Read these instructions and check to be sure all parts and tools are accounted for. Please retain these installation instructions for future reference.

IMPORTANT

This LED Auxiliary Light is exclusively designed for your motorcycle. Please read the installation instructions thoroughly before beginning. Installation is easier if the motorcycle is clean and free of debris.

INSTALLATION INSTRUCTIONS

Note: Shift motorcycle transmission into "PARK". Turn key to "OFF" position and remove from motorcycle.

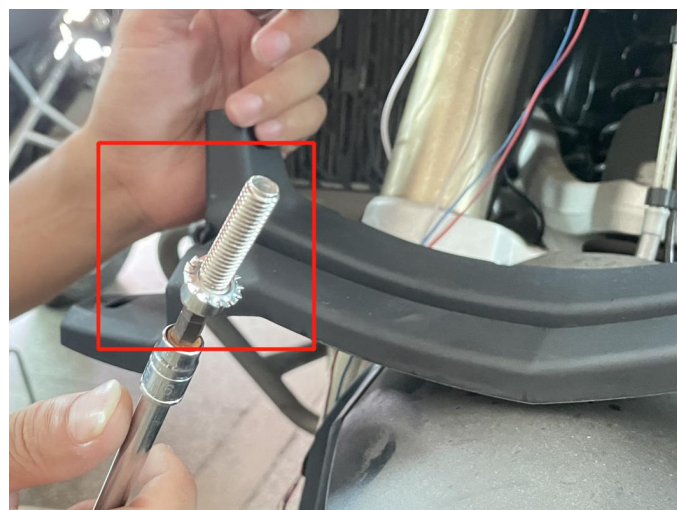
1. Products Display



2. Remove the original headlight trim cover. As the picture shows:

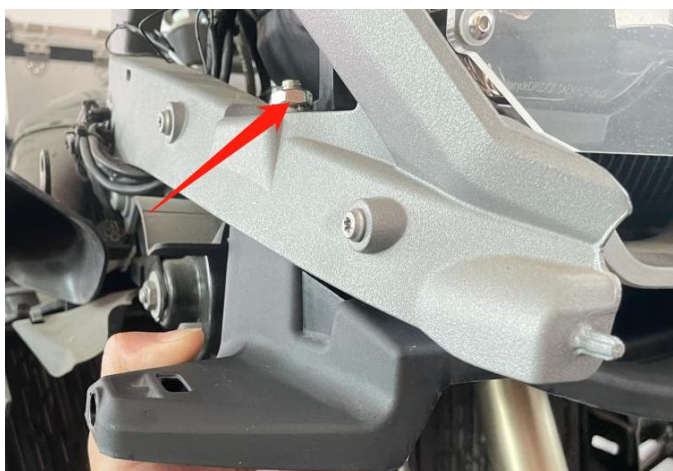


3. Fix the auxiliary lamp bracket onto the original motorcycle using the screws and nuts provided with the product, and then reinstall the headlight decorative cover. As the picture shows:



LED Auxiliary Light for BMW R1250GS 2014-2023

VST-010502-001



4. Auxiliary light bracket is Installation finished.



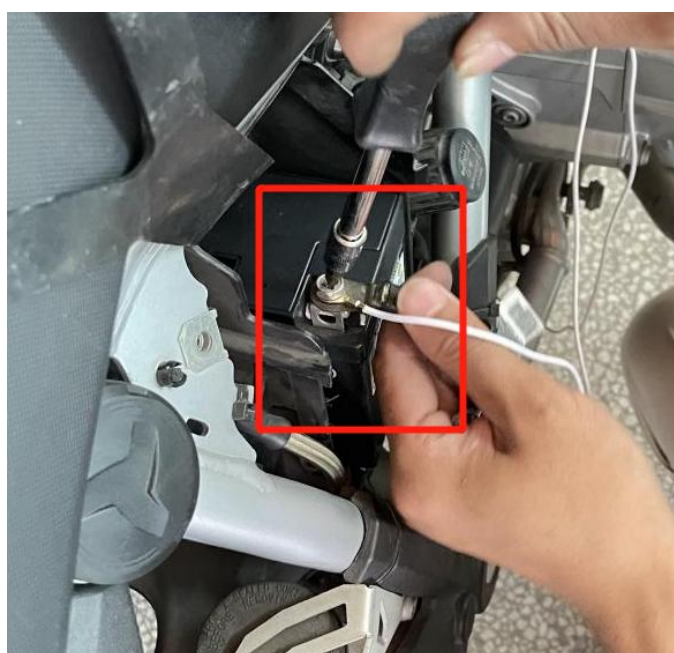
5. Fix the lighting lamp to both ends of the auxiliary lamp bracket using matching screws and nuts. As the picture shows:



6. First, fix the control switch to the original handle using the original screws, and then pull the wiring harness in the package through the gaps to the front auxiliary light and the original motorcycle battery. Finally, connect one end of the wiring harness to the auxiliary lamp wiring harness, and the other end to the positive and negative poles of the battery. As the picture shows:

LED Auxiliary Light for BMW R1250GS 2014-2023

VST-010502-001



7. Finished Installation



Note: Please refer to the installation video in the Amazon listing before your installation, or contact the seller for the installation video.