

Front Turn Signal Lamp for Kawasaki Ninja Z400

VST-010702-002



BEFORE YOU BEGIN

Read these instructions and check to be sure all parts and tools are accounted for. Please retain these installation instructions for future reference.

IMPORTANT

This front turn signal lamp is exclusively designed for your motorcycle. Please read the installation instructions thoroughly before beginning. Installation is easier if the motorcycle is clean and free of debris.

INSTALLATION INSTRUCTIONS

Note: Shift motorcycle transmission into "PARK". Turn key to "OFF" position and remove from motorcycle.

1. Products Display



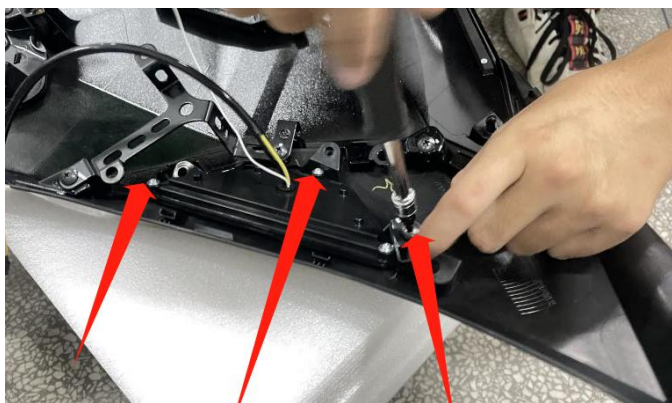
2. First, remove the original seat cushion and the decorative panels on both sides of the fuel tank. As the picture shows:



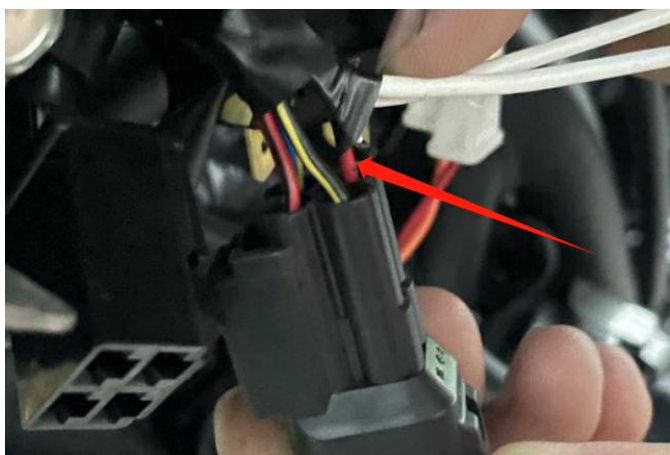
3. Remove the original turn signal daytime running light from the decorative panel and replace it with a new one, which can be fixed using the original screws. (Replace and install in the same way on the other side). As the picture shows:

Front Turn Signal Lamp for Kawasaki Ninja Z400

VST-010702-002



4. Break the skin of the red wire harness on the original motorcycle headlight wire harness plug; Then take out the extension cable from the package and also break the skin; Connect to the headlight wire harness. Then pull the other end of the extension cable to the turn signal daytime running lights on both sides and connect it to the white wire harness on the daytime running lights. Finally, wrap all connections with insulating tape. As the picture shows:



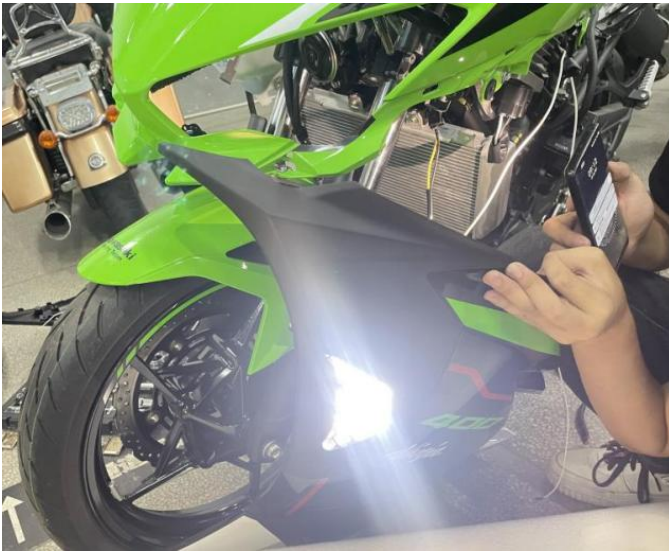
5. After completing the wiring, start the motorcycle and turn on the turn signal turn signal switch to check if the functions of the daytime running lights and turn signal lights are work. Once they are confirmed to be correct, the decorative panel and other accessories can be installed back in place.

Notice: If the turn signal lights flash frequently after being turned on, you need to find a small controller located near the headlight harness and replace it with the controller inside the product package. Some models may have problems with the original motorcycle harness not being able to connect to the new controller. You can use the adapter cable inside the package to convert the interface.

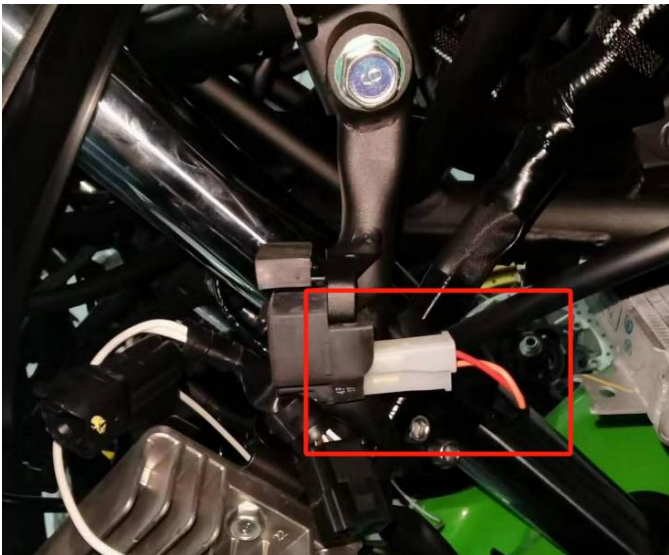


Front Turn Signal Lamp for Kawasaki Ninja Z400

VST-010702-002



6. Installation finished.



Note: Please refer to the installation video in the Amazon listing before your installation, or contact the seller for the installation video.