

LED Taillights for Kawasaki Ninja 400 2018-2024

VST-010702-003



BEFORE YOU BEGIN

Read these instructions and check to be sure all parts and tools are accounted for. Please retain these installation instructions for future reference.

IMPORTANT

This taillight is exclusively designed for your motorcycle. Please read the installation instructions thoroughly before beginning. Installation is easier if the motorcycle is clean and free of debris.

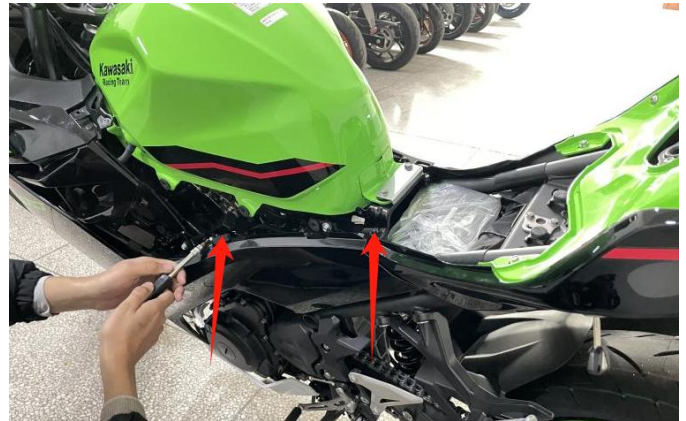
INSTALLATION INSTRUCTIONS

Note: Shift motorcycle transmission into "PARK". Turn key to "OFF" position and remove from motorcycle.

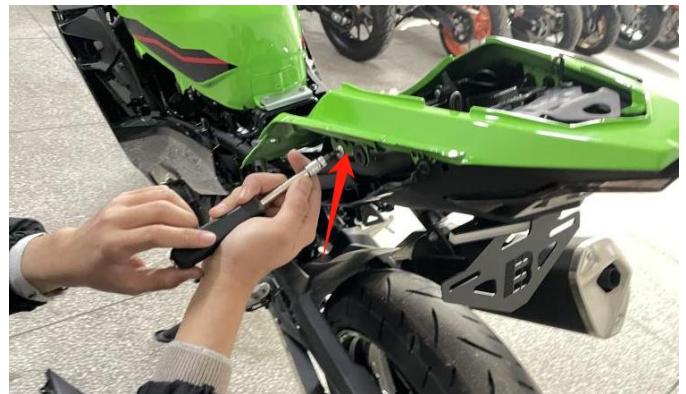
1. Products Display



2. Remove the original seat cushion of the motorcycle and the decorative panels on both sides of the seat cushion. As the picture shows:

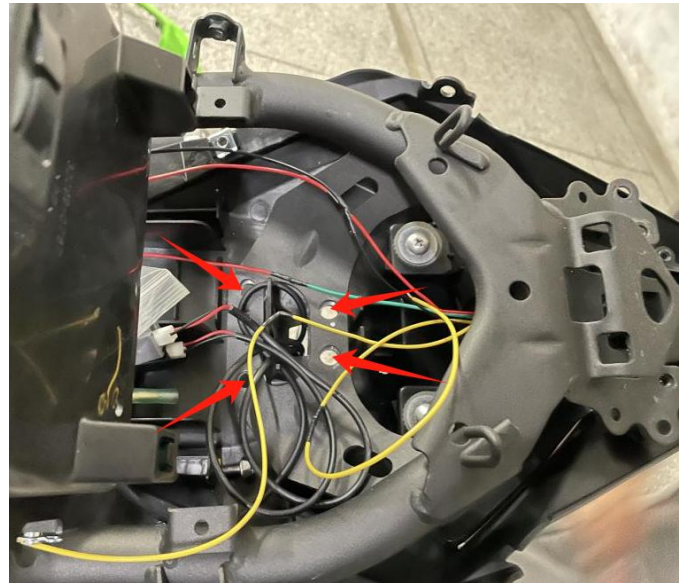


3. Remove the original rear seat exterior trim parts and license plate bracket of the motorcycle. As the picture shows:

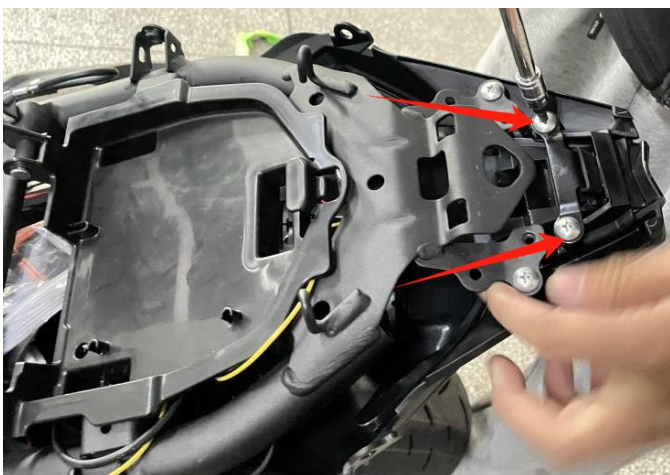


LED Taillights for Kawasaki Ninja 400 2018-2024

VST-010702-003



4. Remove the original motorcycle tail light bracket (if no have , can be omitted) and tail light, then disconnect the tail light harness connector.



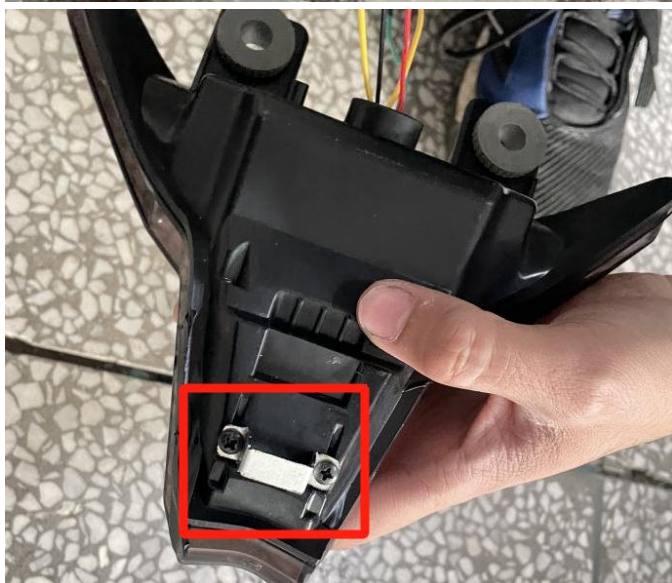
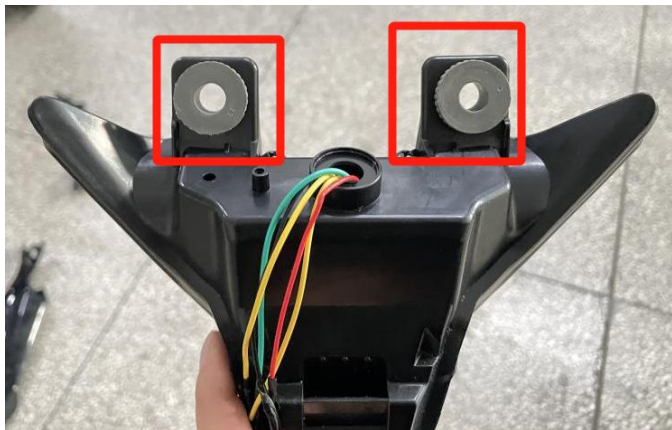
5. First, remove the rubber ring from the original tail light and move it to the new tail light according to its original position. Then, fix the iron bracket in the package to the rear shell of

LED Taillights for Kawasaki Ninja 400 2018-2024

VST-010702-003

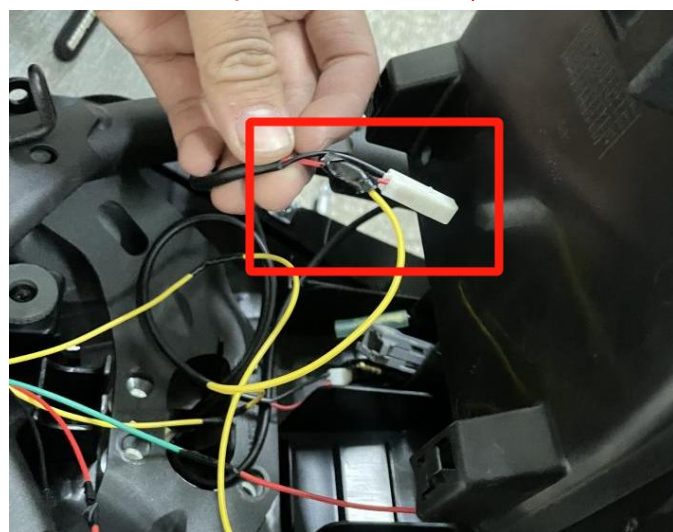


the new tail light with self tapping screws (if the original motorcycle does not have a tail light bracket, this step can be omitted). As the picture shows:



light harness to the rear turn signal light harness of the motorcycle respectively (as it is a parallel connection, please take insulation protection). After connecting the turn signal harness, start the motorcycle to check if the left and right turn signal functions of the tail lights are synchronized. If they are not synchronized, please replace the left and right turn signal harnesses. After the inspection is completed, install and fix the tail lights. Finally, install the previously disassembled motorcycle components back onto the motorcycle

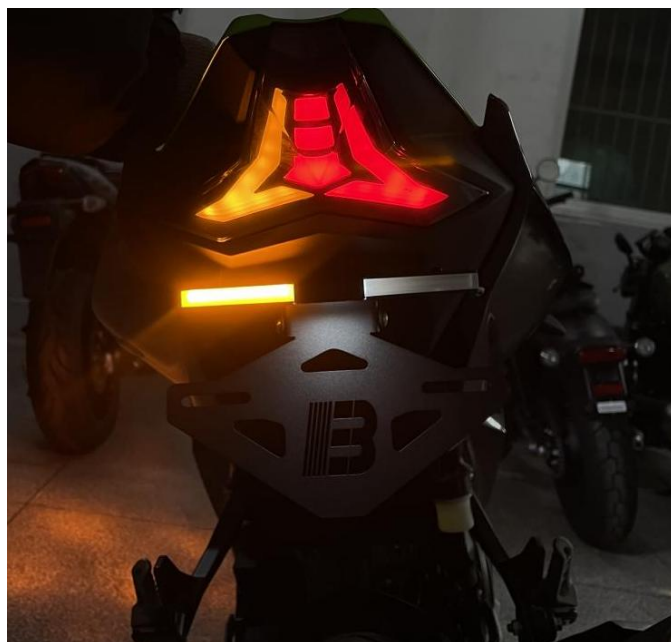
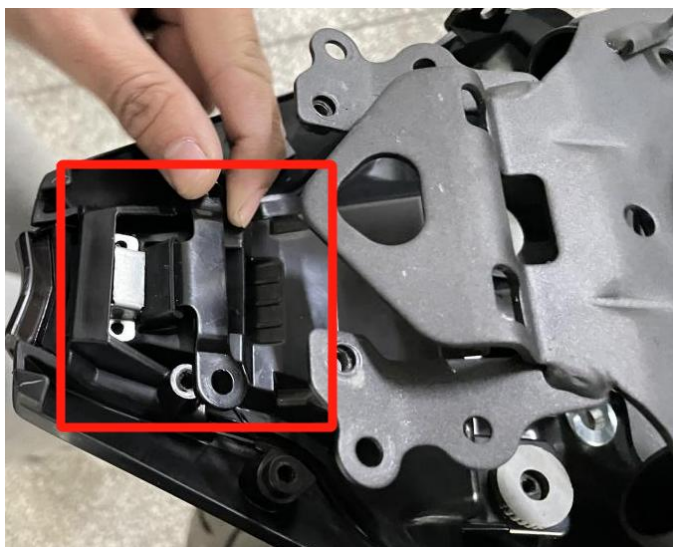
Notice: When installing the motorcycle original tail light fixing bracket, it is necessary to clip the bracket into the small bracket on the rear shell of the tail light and then fix it with screws (if the original motorcycle does not have this small bracket, this step can be omitted)



6. Install the new taillights back onto the motorcycle and connect the wiring harness connectors. Then connect the tail turn signal

LED Taillights for Kawasaki Ninja 400 2018-2024

VST-010702-003



Note: Please refer to the installation video in the Amazon listing before your installation, or contact the seller for the installation video.



7. Installation finished.

