

Engine Guard Protector for Kawasaki Ninja 400 / 250 2018-2024

VST-010703-005



BEFORE YOU BEGIN

Read these instructions and check to be sure all parts and tools are accounted for. Please retain these installation instructions for future reference.

IMPORTANT

This engine guard protector is exclusively designed for your motorcycle. Please read the installation instructions thoroughly before beginning. Installation is easier if the motorcycle is clean and free of debris.

INSTALLATION INSTRUCTIONS

Note: Shift motorcycle transmission into "PARK". Turn key to "OFF" position and remove from motorcycle.

1. Products Display



2. Firstly, remove the back cushion and pull the drawstring to remove the front cushion. As the picture shows:



Engine Guard Protector for Kawasaki Ninja 400 / 250 2018-2024

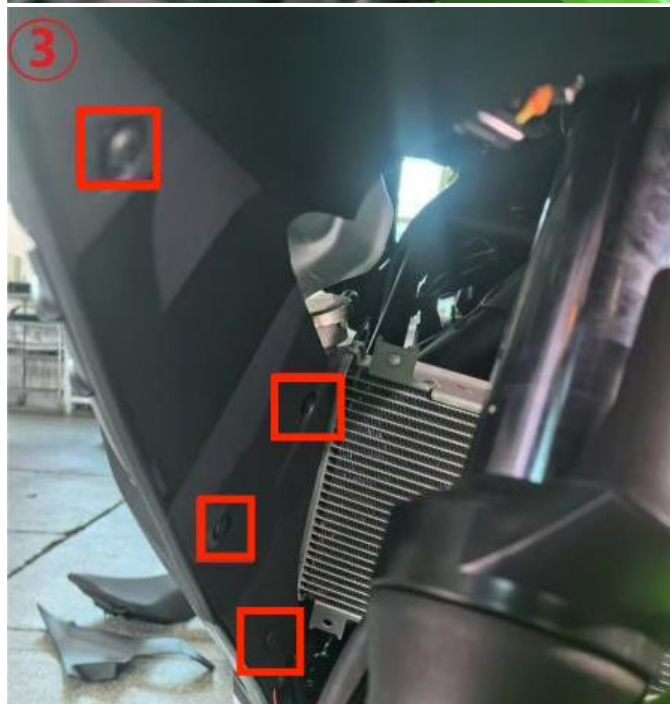
VST-010703-005



3. Secondly, remove and keep the three original screws, then remove the plastic side panels. As the picture shows:

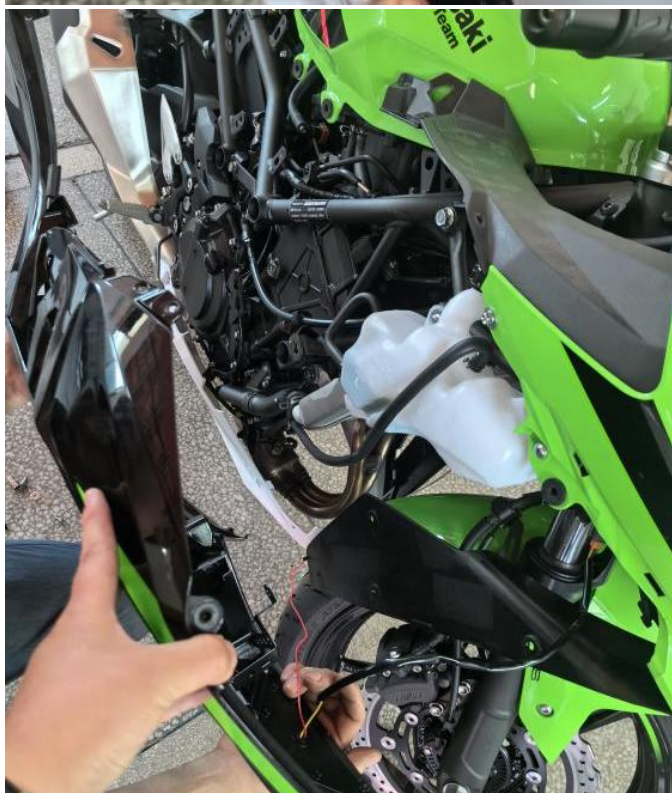


4. Thirdly, remove the following accessories sequentially and keep them for later use: 3 screws and 1 plastic buckle in picture ①, 1 screw in picture ②, 4 plastic buckles in picture ③, 2 screws in picture ④, 1 screw in picture ⑤, and then remove the plastic side panels part. As the picture shows:



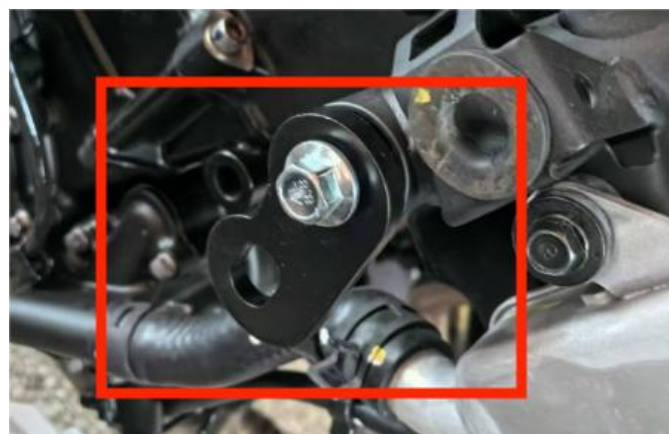
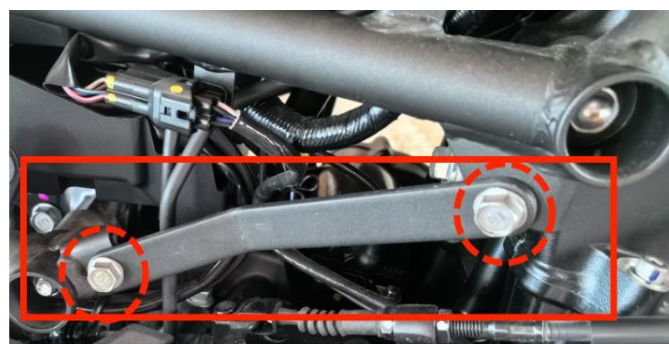
Engine Guard Protector for Kawasaki Ninja 400 / 250 2018-2024

VST-010703-005



5. Fourth, remove the iron bracket of the original bike, and install the bracket R on the frame with the two screws removed; Then remove the ball screws of the original bike, and install the bracket A with the outer hexagon screws of M10*90. As the picture shows.

Note: Hexagon screw of M10*130 for the left side of the installation.



Engine Guard Protector for Kawasaki Ninja 400 / 250 2018-2024

VST-010703-005



6. Fifth, after removing the original screws, use the removed screws to fix the upper end of the engine guard in the position shown in the figure.



Engine Guard Protector for Kawasaki Ninja 400 / 250 2018-2024

VST-010703-005



7. Sixth, fix the lower left end of the guard bar on the bracket R with the outer hexagon screw and nut of M8*20. As the picture shows.



8. Finally, fix the lower right end of the engine guard bar on bracket A with the hexagon screw of M12*20. Tighten all the screws together.



9. Then install the plastic side panels to the frame, tighten the screws, replace the motorcycle saddle, and the installation is complete.



Note: Please refer to the installation video in the Amazon listing before your installation, or contact the seller for the installation video.