

BEFORE YOU BEGIN

Read these instructions and check to be sure all parts and tools are accounted for. Please retain these installation instructions for future reference.

IMPORTANT

This license plate bracket is exclusively designed for your motorcycle. Please read the installation instructions thoroughly before beginning. Installation is easier if the motorcycle is clean and free of debris.

INSTALLATION INSTRUCTIONS

Note: Shift motorcycle transmission into "PARK". Turn key to "OFF" position and remove from motorcycle.

1. Products Display:



2. First open the rear seat cushion, pull the U-ring to take down the center cushion and remove the six screws as shown.



License Plate Bracket for Kawasaki Z900 2017-2023

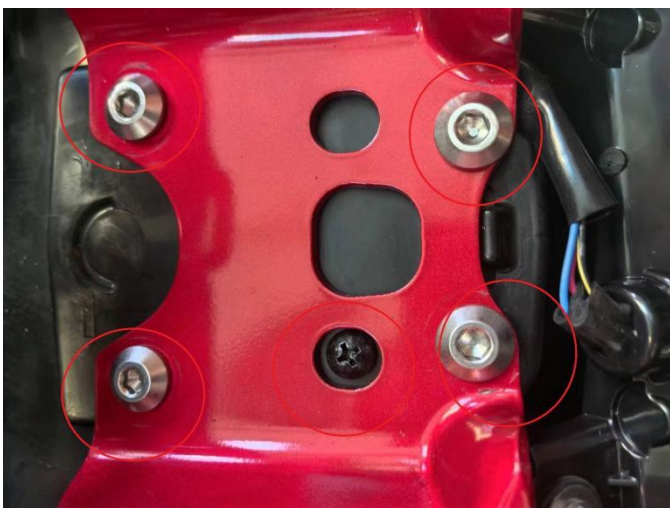
VST-010703-008



3. Remove the plastic frame under the cushion and detach the wiring harness. Remove the original plastic license plate frame after removing the four screws shown below.



4. Remove the 6 screws from the plastic license plate frame. As the picture shows:



License Plate Bracket for Kawasaki Z900 2017-2023

VST-010703-008



5. Remove the 3 screws shown in the picture.



6. Remove the 3 lights from the plastic pieces.

As the picture shows:



7. Mount the 3 lights on the iron license plate mounting bracket and add 2 aluminum posts to the rear license plate light location. As the picture shows:



License Plate Bracket for Kawasaki Z900 2017-2023

VST-010703-008



8. Secure the license plate mounting plate to the rear frame with 4 M6*25 socket head cap screws and M6 flat washers, tighten the screws. Restore the wiring harness to its original state. Restore the tail frame to its original state with the 6 bolts removed from the motorcycle. As the picture shows:



9. Installation complete.



Note: Please refer to the installation video in the Amazon listing before your installation, or contact the seller for the installation video.